

---

PLANTERS GROVE  
AT  
MCKEWN

---



**Centex**

[WWW.MCKEWN.COM](http://WWW.MCKEWN.COM)



*Stretching across more than a thousand acres* in Summerville, McKewn is rich in natural beauty and historical significance.

The land was once part of a tract granted to William Burnley in 1705 and by the mid-1700s was a working rice plantation. Archaeologists commissioned to uncover the secrets of the plantation's past have discovered pottery, bottle glass fragments, nails, bricks, shell, bone, and pipe fragments that provide a glimpse into Colonial life.



Today, Centex Homes is working to preserve the best of the past and create a vibrant new future for families at McKewn. This carefully masterplanned community features a variety of neighborhoods and home models—starting with our popular Founders Collection—to fit almost any lifestyle and budget. Family amenity centers with pools, playgrounds, parks and gathering areas will add a refreshing dimension to community life.

We invite you to visit us online at [www.mckewn.com](http://www.mckewn.com) to learn more.



PLANTERS GROVE  
at  
**McKEWN**


*Phase 1*

*Future  
Development*



*Freshwater Wetlands*

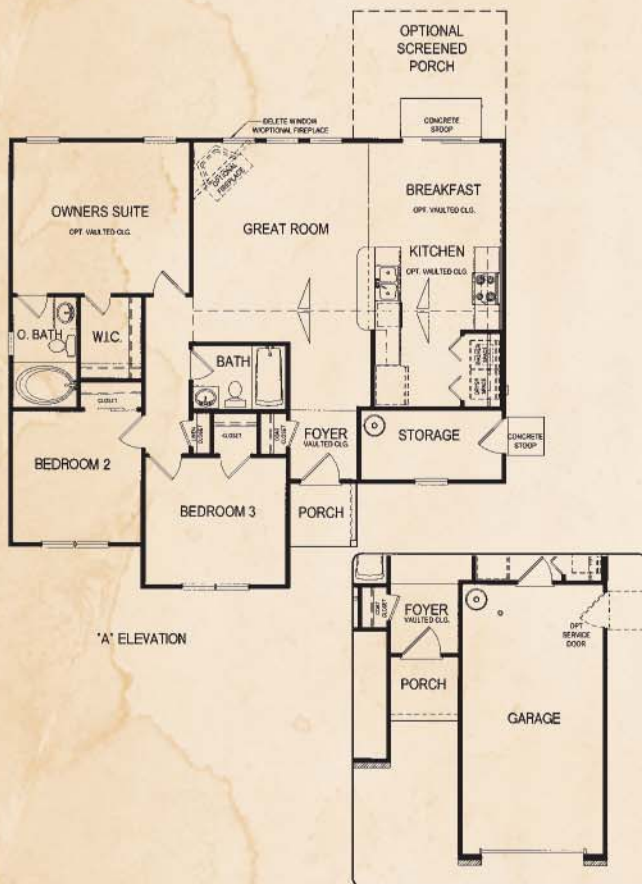
BY CENTEX HOMES  
[www.McKewn.com](http://www.McKewn.com)

For conceptual purposes only. Subject to change without notice. 



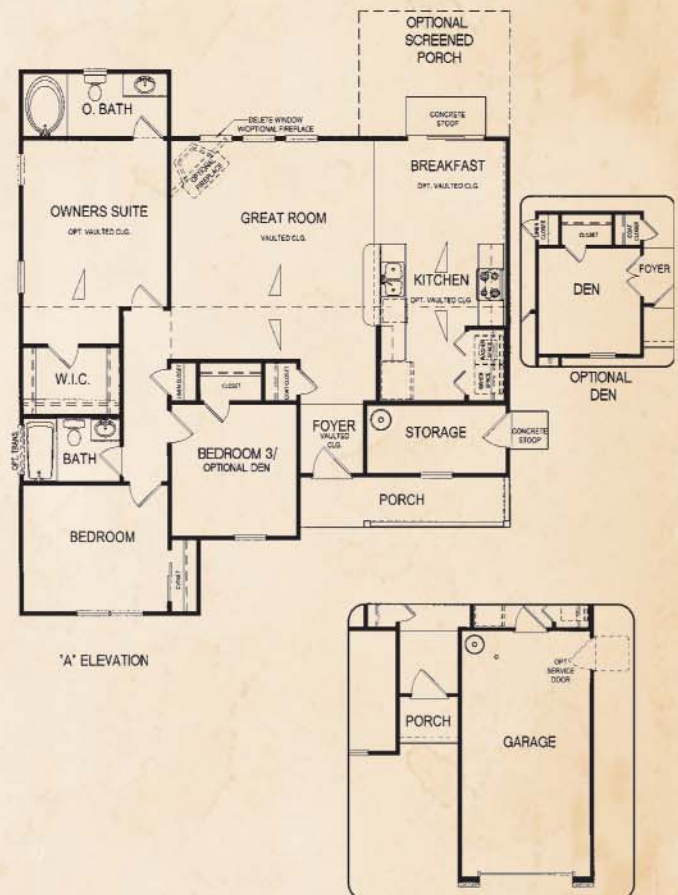
# THE BARFIELD

1,136 sq. ft. • 1-Story • 3 Bedrooms • 2 Baths



# THE KIRKLAND

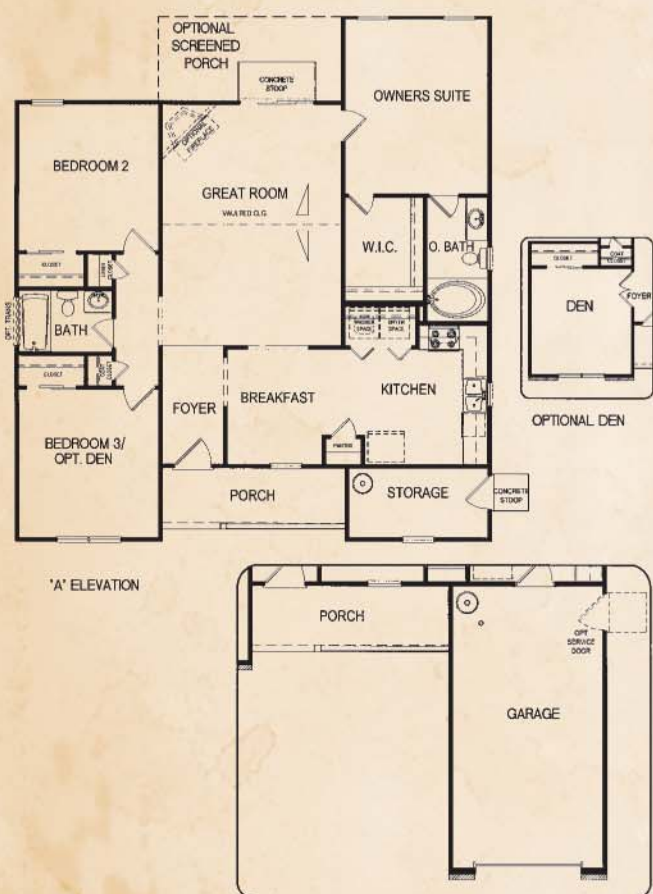
1,249 sq. ft. • 1-Story • 3 Bedrooms • 2 Baths





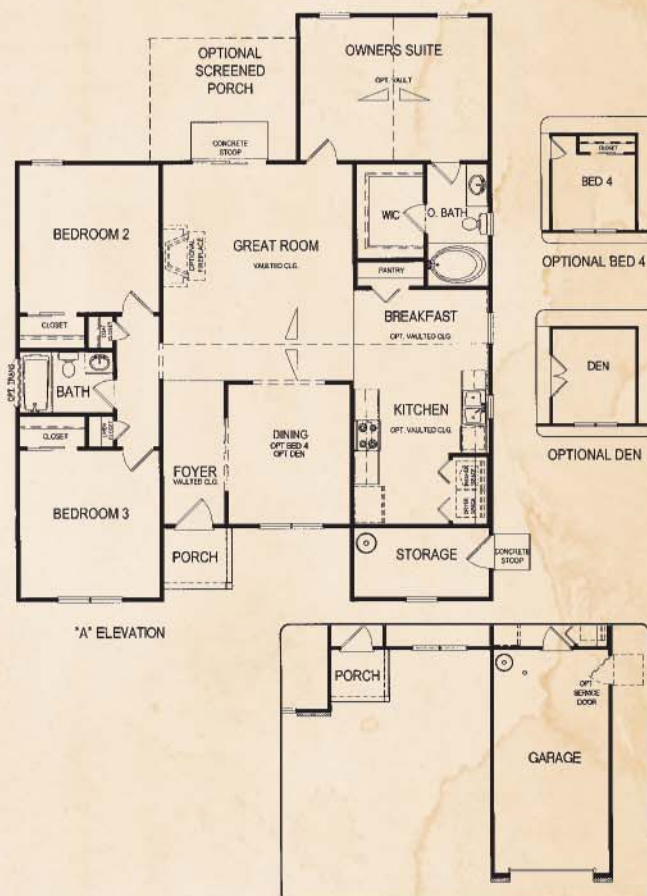
# THE WILKINSON

1,328 sq. ft. • 1-Story • 3 Bedrooms • 2 Baths



# THE CHANABERRY

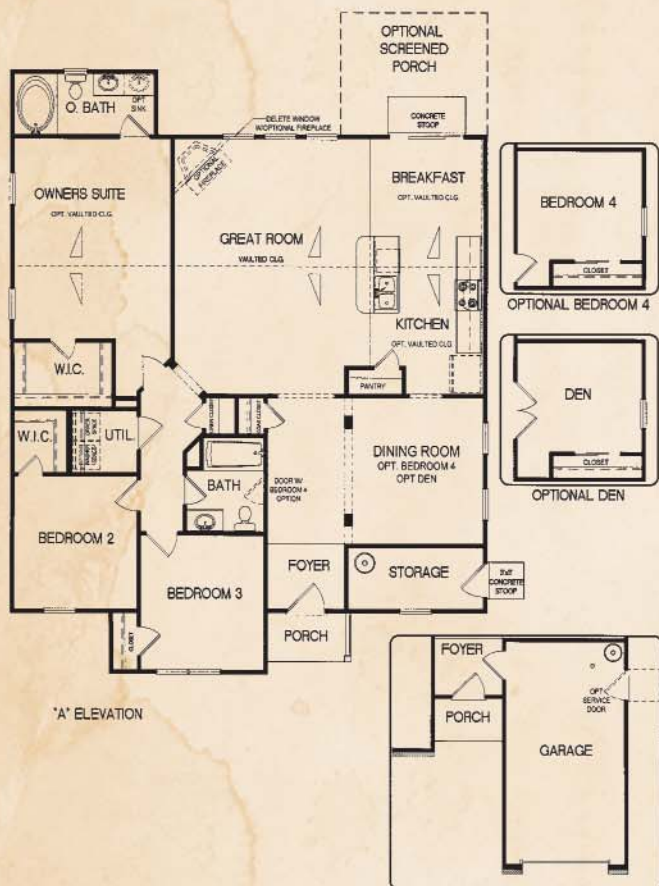
1,433 sq. ft. • 1-Story • 3 Bedrooms • 2 Baths





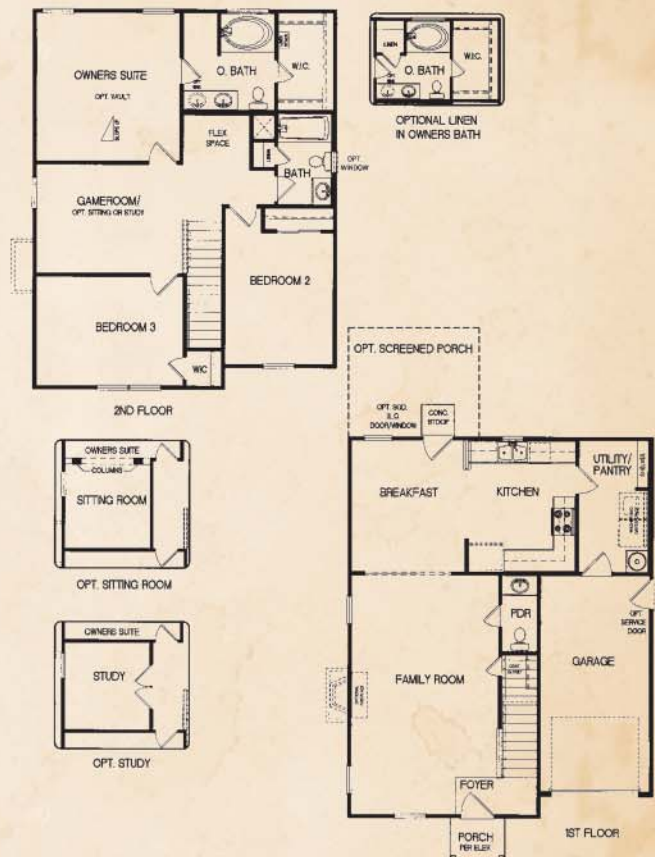
# THE FAIRFAX

1,589 sq. ft. • 1-Story • 3 Bedrooms • 2 Baths



# THE TANNER

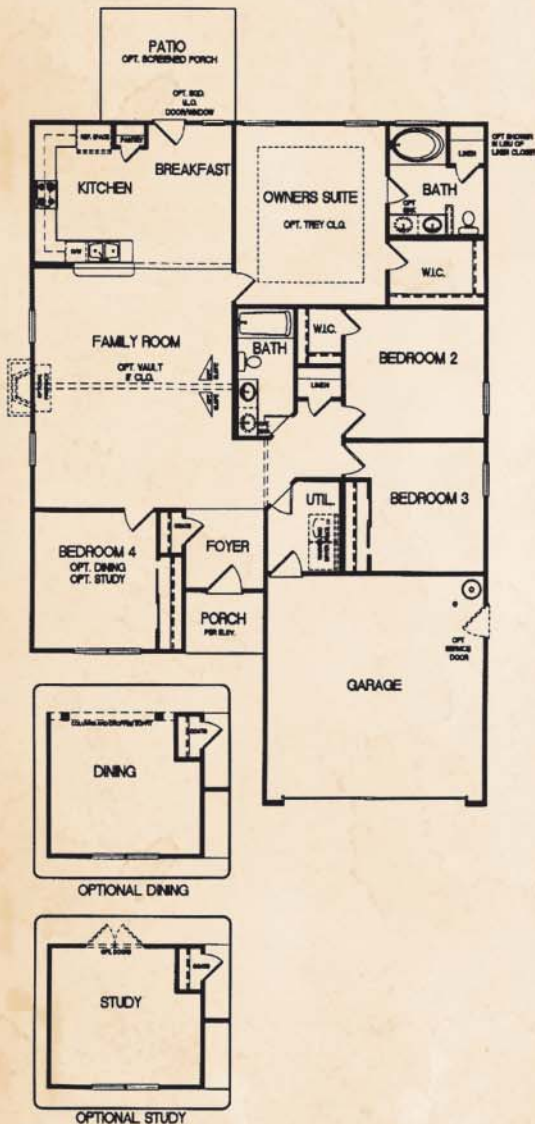
1,675 sq. ft. • 2-Story • 3 Bedrooms • 2 Baths





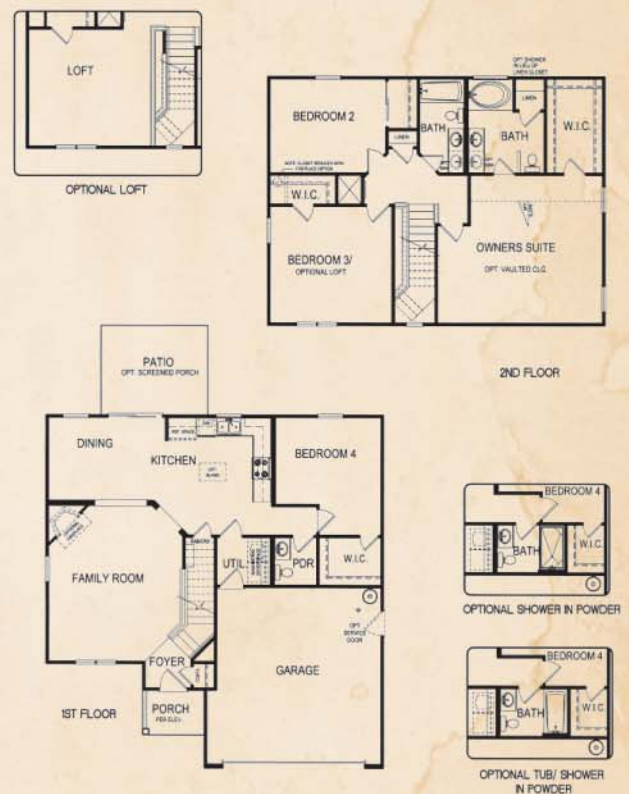
# THE CHESAPEAKE

1,733 sq. ft. • 1-Story • 3-4 Bedrooms • 2 Baths



# THE YORKSHIRE

1,920 sq. ft. • 2-Story • 4 Bedrooms • 2.5 Baths



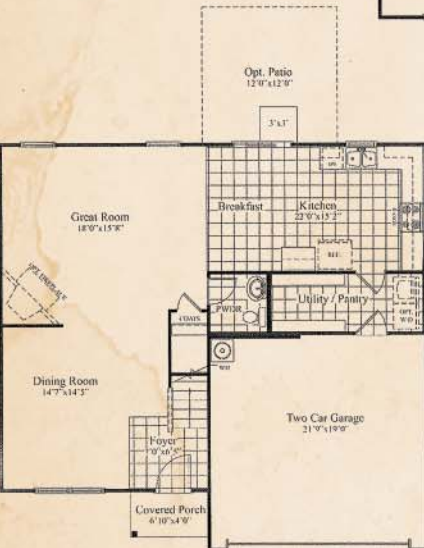
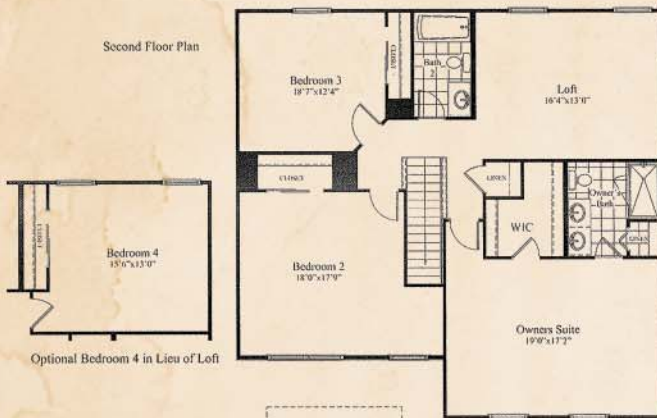


# THE GARLAND

2,154 sq. ft. • 2-Story • 3 Bedrooms • 2.5 Baths



Second Floor Plan



First Floor Plan



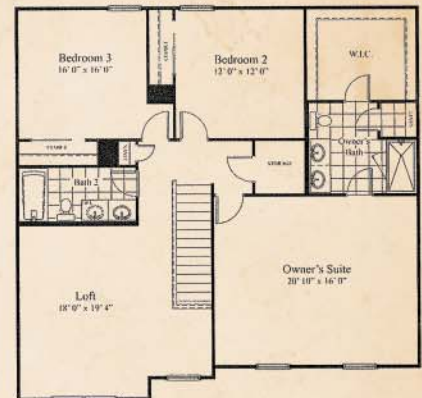
Optional Owner's Bath Upgrade

# THE HOLLISTER

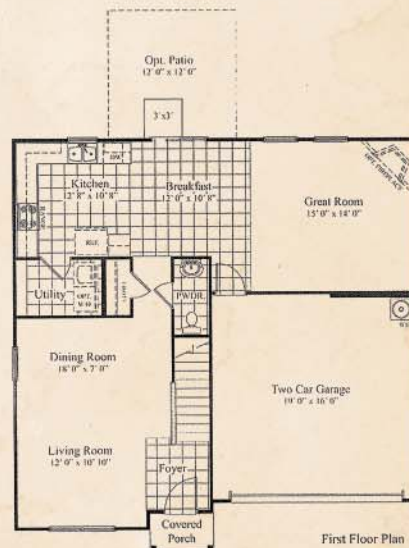
2,265 sq. ft. • 2-Story • 3 Bedrooms • 2.5 Baths



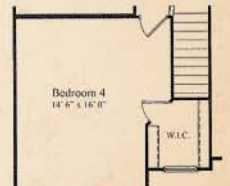
Optional Owner's Bath Upgrade



Second Floor Plan



First Floor Plan

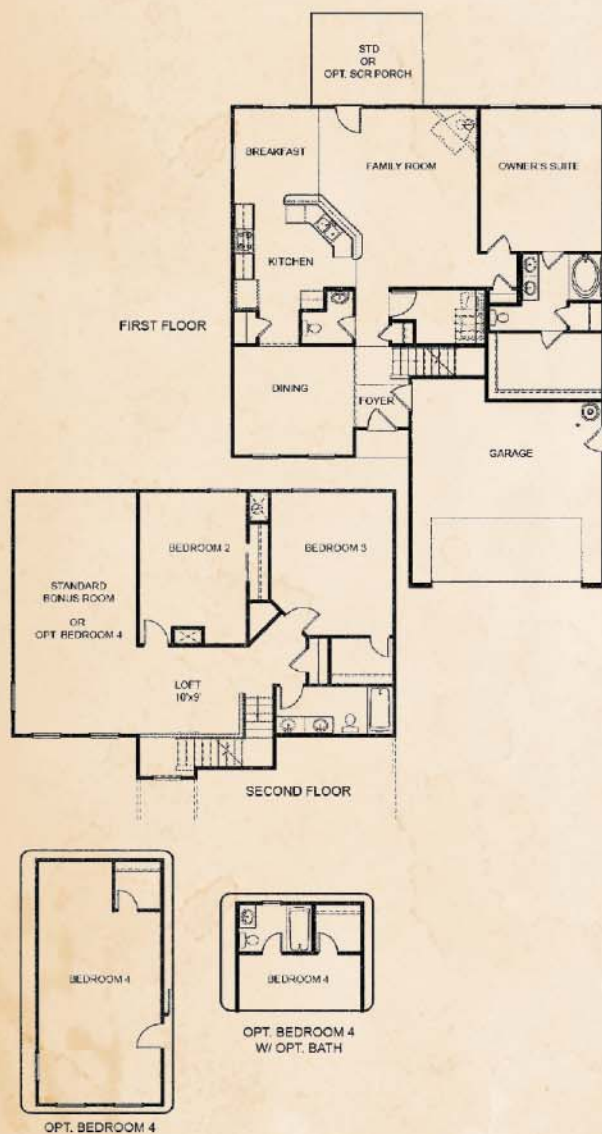


Optional Bedroom 4 in Lieu of Loft



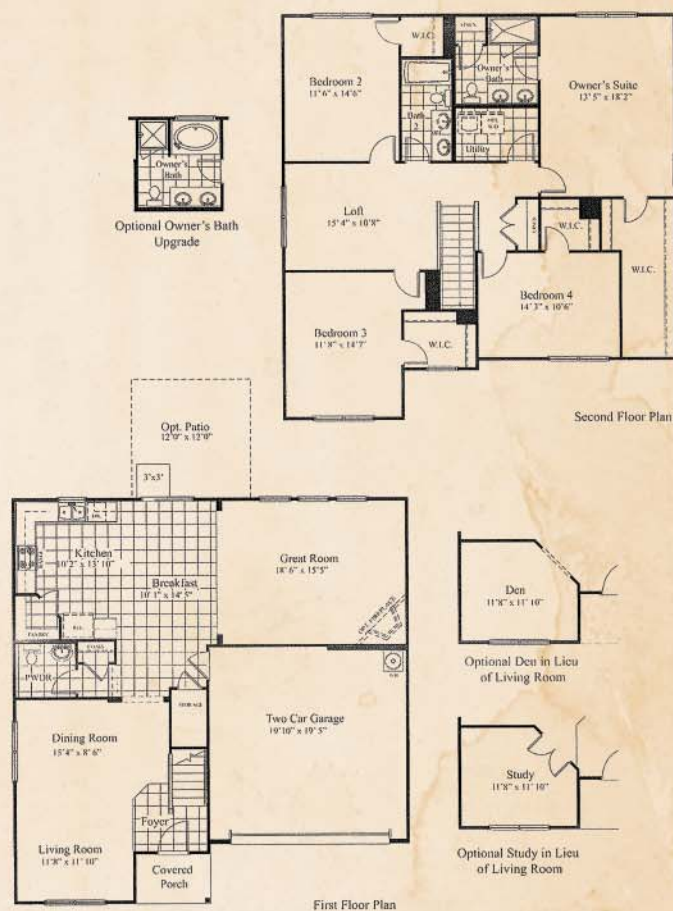
# THE ANDERSON

2,384 sq. ft. • 2-Story • 3 Bedrooms • 2 Baths



# THE PARKWOOD

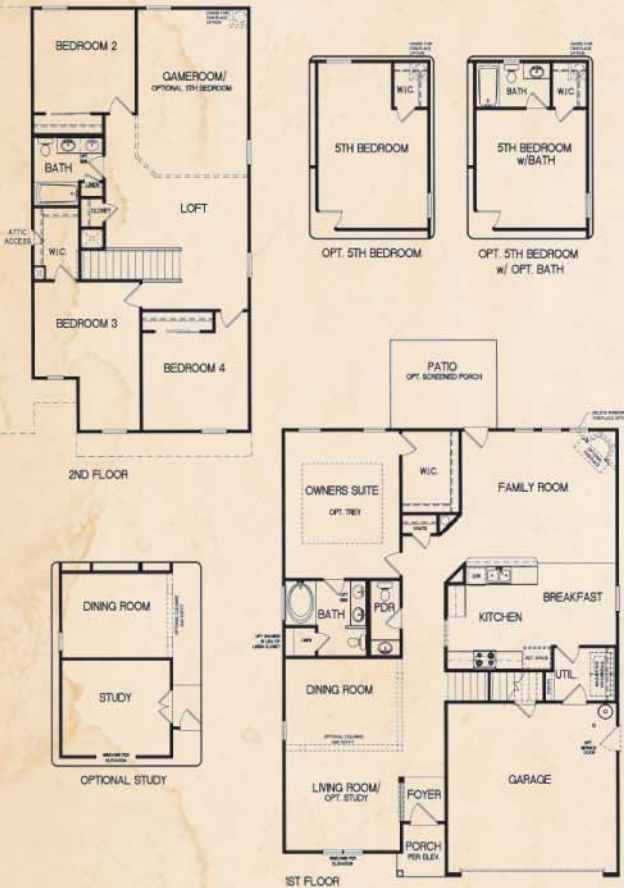
2,524 sq. ft. • 2-Story • 4 Bedrooms • 2.5 Baths





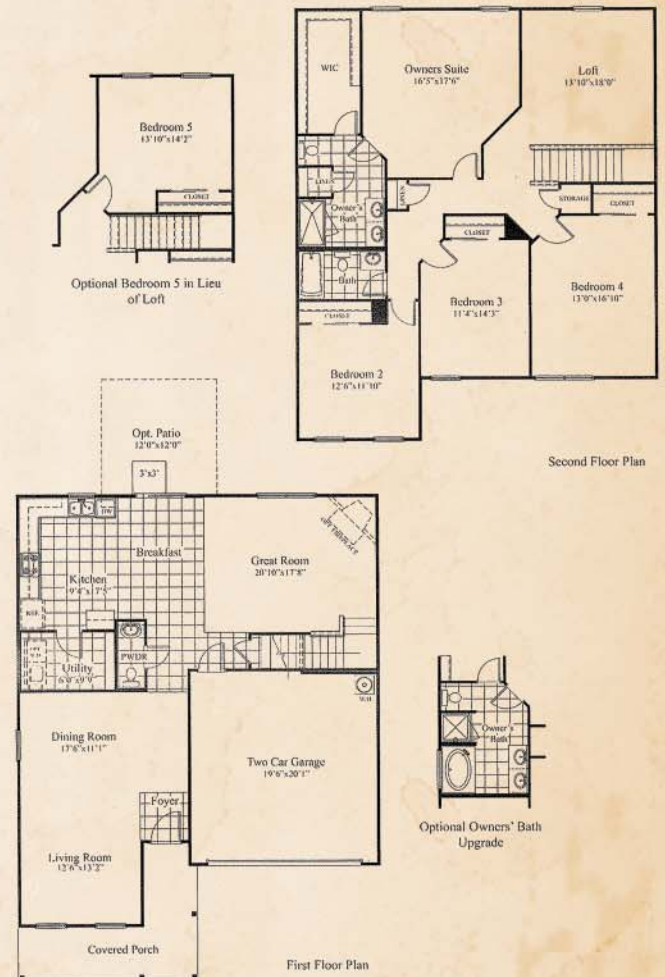
# THE LEXINGTON

2,590 sq. ft. • 2-Story • 4 Bedrooms • 2.5 Baths



# THE WOODLAND

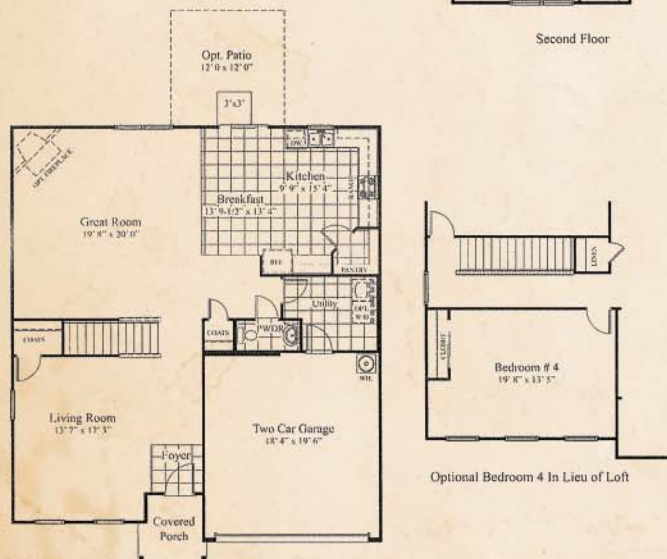
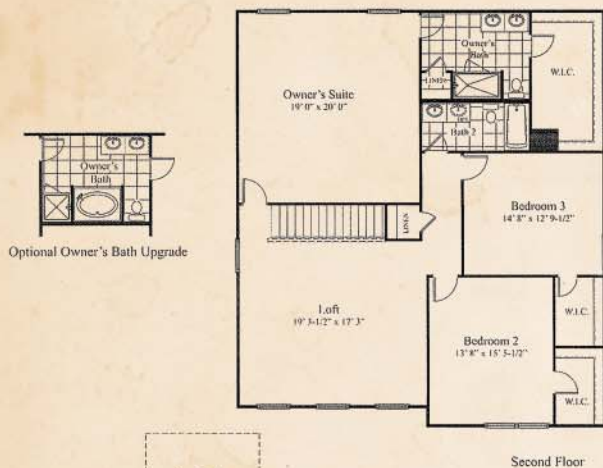
2,671 sq. ft. • 2-Story • 4 Bedrooms • 2.5 Baths





# THE ALEXANDER

2,918 sq. ft. • 2-Story • 3 Bedrooms • 2.5 Baths





# STANDARD FEATURES

## DESIGNER INTERIOR FEATURES

- Smooth ceilings
- MOEN chrome faucets in kitchen & baths
- ARMSTRONG no-wax vinyl floor covering with mildew resistant backing
- SHAW soil-resistant carpet
- Ventilated shelving in all closets
- SCHLAGE satin nickel door hardware
- Traditional six panel doors
- Smoke detectors
- Brushed nickel lighting package
- 9' ceilings on first floor

## ELECTRICAL CONVENIENCES

- Pre-wires for 2 telephone outlets in kitchen and master bedroom
- Pre-wires for 2 cable outlets in family room and master bedroom
- Pre-wire for garage door opener
- Washer and dryer connections
- 2 all-weather receptacles

## ENERGY EFFICIENT FEATURES

- LENNOX 13-seer heating and air conditioning unit
- R-13 wall insulation
- R-30 ceiling insulation
- Single hung, low-emittance vinyl framed windows
- Gas/electric insulated hot water heater where applicable

## LAVISH BATH FEATURES

- 5 ft. shower with sliding glass doors in master
- Fiberglass tub & shower unit in secondary bath
- Pedestal sink with mirror in powder room, per plan
- Water saver toilets
- Cultured marble vanity tops in all baths

## ENGINEERING FEATURES

- Structure enhancing OSB exterior sheathing
- All houses sealed by SC licensed engineer

## OUTSTANDING KITCHEN FEATURES

- WHIRLPOOL free-standing range
- WILSONART durable laminate kitchen countertops
- Stainless steel double bowl sink with vegetable sprayer
- WHIRLPOOL multi-cycle dishwasher
- 1/3 horsepower food disposal
- 30" oak flat panel cabinets
- Ice maker connection

## EXTERIOR & ARCHITECTURAL FEATURES

- REVERE low maintenance vinyl siding with lifetime manufacturer's warranty
- 20-year shingles
- Low maintenance aluminum and vinyl soffits and trim
- Front and rear lawns professionally landscaped with 70% sod and 30% pine straw
- Rear concrete patio
- Fiberglass four panel front door
- Deadbolts on all exterior doors
- WAYNE DALTON insulated, pinch-resistant garage door with glass windows
- Mailbox with post

## ADDITIONAL SERVICES

- Two-year-fit-and-finish warranty that's twice the industry standard
- 10-year structural warranty
- Pre-Construction, Pre-Drywall, and Pre-Settlement orientations with Field Manager
- HomeTeam Pest Defense TAEXX built-in pest control system
- Final inspection completed by Division Quality Director prior to occupancy
- Informative Homeowner's Reference Manual
- In-house warranty department with service by request
- Convenient Financing available through CTX Mortgage



# COMMUNITY INFORMATION

## SALES CENTER

Karen Wurst & Shelley Monahan, Sales Executives  
9676 Wilhammer Court, Summerville 29483  
Phone: (843) 437-7733

## LOCATION

From Charleston, take I-26 west to exit 205A (Hwy 78). Proceed west approximately 1 mile and turn left onto Ladson Road. Turn left onto Palmetto Blvd. and proceed 1.5 miles and turn right onto Patriot Blvd. Proceed approximately 1 mile and turn right onto Fleming Blvd.

## COMMUNITY SIZE

Phase I = approximately 27.1 acres, 56 lots  
McKewn = 586.5 acres

## MUNICIPALITIES

Dorchester County, City of North Charleston

## AREA SCHOOLS

Dorchester County School District	(843) 873-2901
Fort Dorchester Elementary	(843) 760-4450
Oakbrook Middle School	(843) 873-9750
Ft. Dorchester High School	(843) 760-4450

## COLLEGES & UNIVERSITIES

The College of Charleston	(843) 953-5507
Charleston Southern University	(843) 863-7001
Trident Technical College	(843) 572-6111
The Citadel Military College	(843) 953-5000
Webster University	(843) 572-2675
Medical University of South Carolina	(843) 792-2300

## SHOPPING & RESTAURANTS

Wal-Mart Super Center, Publix, Piggly Wiggly, Bi-Lo, Northwoods Mall, Sonic

## CHURCHES

Most religious denominations are available in the immediate vicinity. Socially oriented and service-based civic groups openly welcome new members.

## EMERGENCY

Police/Fire Emergency	911
Poison Control	(800) 922-1117
Summerville Medical Center	(843) 832-5000
Medical University of South Carolina	(843) 792-2300

## UTILITIES

SCE & G	(843) 554-7234
Dorchester County Water Department	(843) 832-0077
Bell South	(843) 780-2355
Time Warner Cable	(843) 871-7000
North Charleston Public Works & Sanitation	(843) 745-1026
Dorchester County Recycling	(843) 832-0070

## TRANSPORTATION

Amtrak	(800) 872-7245
Greyhound	(800) 231-2222
Charleston International Airport	(843) 767-7009
Department of Motor Vehicles	(800) 442-1368

## INFORMATION

Charleston Area Convention & Visitors Bureau	(800) 868-8118
Charleston Metro Chamber of Commerce	(843) 577-2510
The Charleston Post and Courier	(843) 853-POST
Dorchester County/Summerville Library	(843) 871-5075
Greater Summerville/Dorchester County Chamber	(843) 873-2931
Dorchester County Voter Registration	(843) 832-0132