
WILLOW BRANCH
AT
MCKEWN



Centex

WWW.MCKEWN.COM

Stretching across more than a thousand acres in Summerville, McKewn is rich in natural beauty and historical significance.

The land was once part of a tract granted to William Burnley in 1705 and by the mid-1700s was a working rice plantation. Archaeologists commissioned to uncover the secrets of the plantation's past have discovered pottery, bottle glass fragments, nails, bricks, shell, bone, and pipe fragments that provide a glimpse into Colonial life.




Today, Centex Homes is working to preserve the best of the past and create a vibrant new future for families at McKewn. This carefully masterplanned community features a variety of neighborhoods and home models—starting with our popular Founders Collection—to fit almost any lifestyle and budget. Family amenity centers with pools, playgrounds, parks and gathering areas will add a refreshing dimension to community life.

We invite you to visit us online at www.mckewn.com to learn more.

WILLOW BRANCH
at
McKEWN

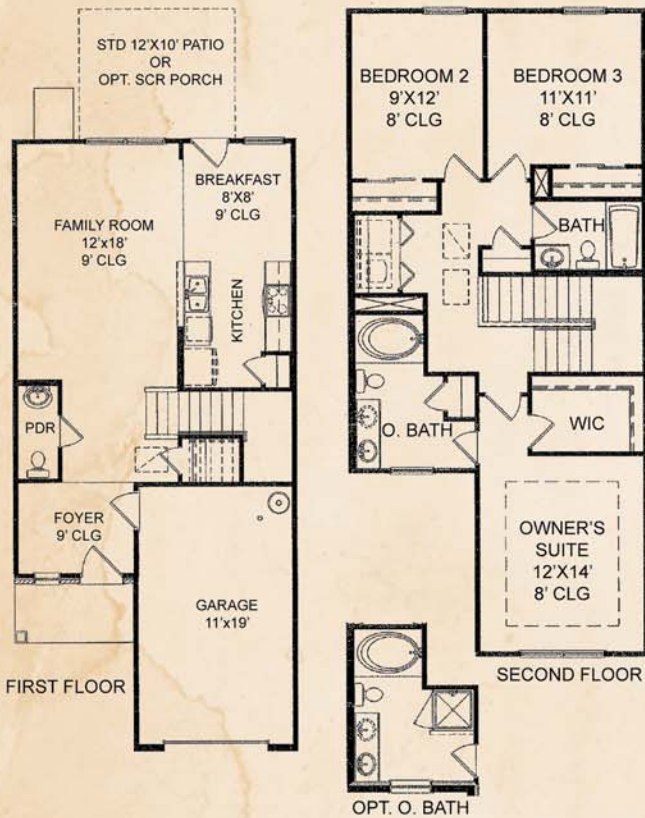


BY CENTEX HOMES
www.McKewn.com

For conceptual purposes only. Subject to change without notice. 

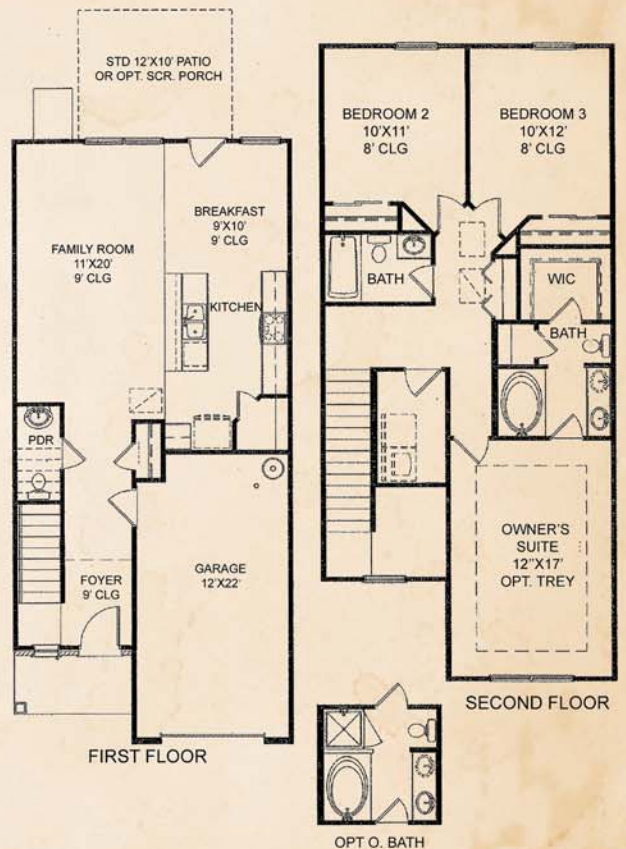
THE DALTON

1,471 sq. ft. + 2-Story + 3 Bedrooms + 2.5 Baths



THE CARLISLE

1,535 sq. ft. + 2-Story + 3 Bedrooms + 2.5 Baths



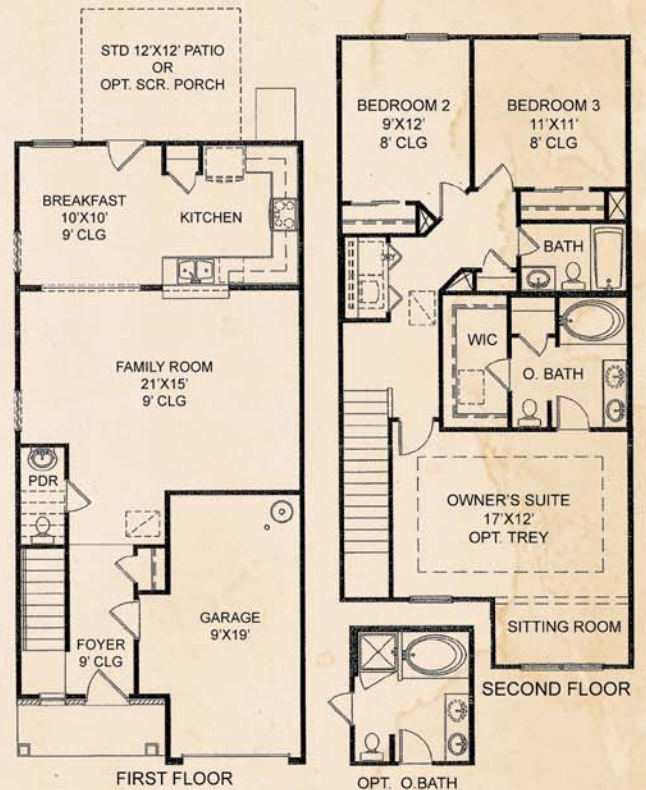
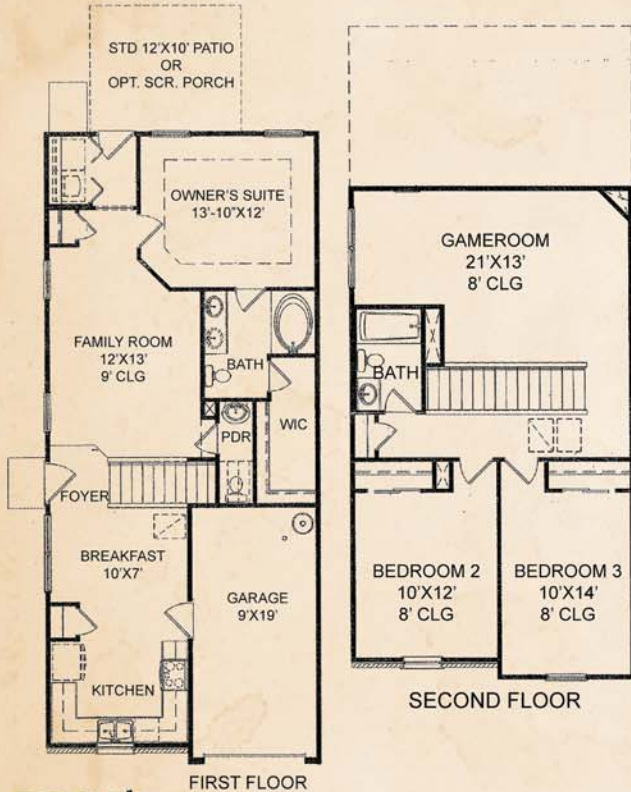
THE NEWBURY

1,623 sq. ft. + 2-Story + 3 Bedrooms + 2.5 Baths



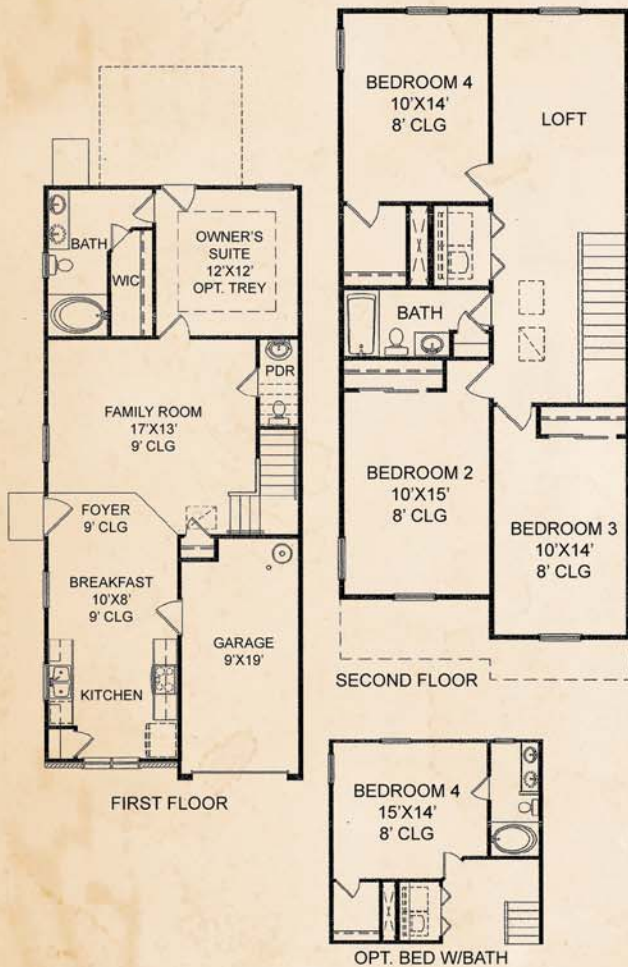
THE BRISTOL

1,645 sq. ft. + 2-Story + 3 Bedrooms + 2.5 Baths



THE WALDEN

1,809 sq. ft. • 2-Story • 4 Bedrooms • 2.5 Baths



STANDARD FEATURES

DESIGNER INTERIOR FEATURES

- Smooth ceilings
- 9 ft. ceilings on the first floor
- MOEN chrome faucets in kitchen & baths
- ARMSTRONG no-wax vinyl floor covering with mildew resistant backing
- SHAW soil-resistant carpet
- CLOSET MAID ventilated shelving in all closets
- SCHLAGE satin nickel door hardware
- Traditional six panel doors
- Smoke detectors
- Brushed nickel lighting package
- Color choices for cabinetry, flooring, and countertops
- SHERWIN WILLIAMS antique white walls with bright white trim

ELECTRICAL CONVENIENCES

- Pre-wires for 2 telephone outlets in kitchen and master bedroom
- Pre-wires for 2 cable outlets in family room and master bedroom
- Pre-wire for garage door opener
- Washer and dryer connections
- 2 all-weather receptacles

ENERGY EFFICIENT FEATURES

- LENNOX 13-seer heating and air conditioning unit
- R-13 wall insulation
- R-30 ceiling insulation
- Single hung, low-emittance vinyl framed windows
- Gas/electric insulated hot water heater where applicable

LAVISH BATH FEATURES

- KOHLER STERLING 5 ft. shower with sliding glass doors in master
- KOHLER STERLING fiberglass tub & shower unit in secondary bath
- Pedestal sink with mirror in powder room, per plan
- MANSFIELD water saver toilets
- Cultured marble vanity tops in all baths

ENGINEERING FEATURES

- Structure enhancing OSB exterior sheathing
- All houses sealed by SC licensed engineer

OUTSTANDING KITCHEN FEATURES

- WHIRLPOOL free-standing range
- WILSONART durable laminate kitchen countertops
- Stainless steel double bowl sink with vegetable sprayer
- WHIRLPOOL multi-cycle dishwasher
- 1/3 horsepower food disposal
- 30" oak flat panel cabinets
- Ice maker connection

EXTERIOR & ARCHITECTURAL FEATURES

- REVERE low maintenance vinyl siding with lifetime manufacturer's warranty
- 20-year shingles
- Low maintenance aluminum and vinyl soffits and trim
- Front and rear lawns professionally landscaped with 70% sod and 30% pine straw
- Rear concrete patio
- Fiberglass four panel front door
- Deadbolts on all exterior doors
- WAYNE DALTON insulated, pinch-resistant garage door with glass windows
- Irrigated front lawns

ADDITIONAL SERVICES

- Two-year-fit-and-finish warranty from Centex Homes
- 10-year limited structural warranty from P.W.C.
- Pre-Construction, Pre-Drywall, and Pre-Settlement orientations with Field Manager
- HOME TEAM SERVICES pest control (tubes in the walls)
- Final inspection completed by Division Quality Director prior to occupancy
- Informative Homeowner's Reference Manual
- In-house warranty department with service by request
- Convenient Financing available through CTX Mortgage

COMMUNITY INFORMATION

SALES CENTER

Karen Wurst & Shelley Monahan, Sales Executives
9676 Wilhammer Court, Summerville 29483
Phone: (843) 437-7733

LOCATION

From Charleston, take I-26 west to exit 205A (Hwy 78). Proceed west approximately 1 mile and turn left onto Ladson Road. Turn left onto Palmetto Blvd. and proceed 1.5 miles and turn right onto Patriot Blvd. Proceed approximately 1 mile and turn right onto Fleming Blvd.

COMMUNITY SIZE

Phase I = approximately 27.1 acres, 56 lots
McKewn = 586.5 acres

MUNICIPALITIES

Dorchester County, City of North Charleston

AREA SCHOOLS

Dorchester County School District	(843) 873-2901
Fort Dorchester Elementary	(843) 760-4450
Oakbrook Middle School	(843) 873-9750
Ft. Dorchester High School	(843) 760-4450

COLLEGES & UNIVERSITIES

The College of Charleston	(843) 953-5507
Charleston Southern University	(843) 863-7001
Trident Technical College	(843) 572-6111
The Citadel Military College	(843) 953-5000
Webster University	(843) 572-2675
Medical University of South Carolina	(843) 792-2300

SHOPPING & RESTAURANTS

Wal-Mart Super Center, Publix, Piggly Wiggly, Bi-Lo, Northwoods Mall, Sonic

CHURCHES

Most religious denominations are available in the immediate vicinity. Socially oriented and service-based civic groups openly welcome new members.

EMERGENCY

Police/Fire Emergency	911
Poison Control	(800) 922-1117
Summerville Medical Center	(843) 832-5000
Medical University of South Carolina	(843) 792-2300

UTILITIES

SCE & G	(843) 554-7234
Dorchester County Water Department	(843) 832-0077
Bell South	(843) 780-2355
Time Warner Cable	(843) 871-7000
North Charleston Public Works & Sanitation	(843) 745-1026
Dorchester County Recycling	(843) 832-0070

TRANSPORTATION

Amtrak	(800) 872-7245
Greyhound	(800) 231-2222
Charleston International Airport	(843) 767-7009
Department of Motor Vehicles	(800) 442-1368

INFORMATION

Charleston Area Convention & Visitors Bureau	(800) 868-8118
Charleston Metro Chamber of Commerce	(843) 577-2510
The Charleston Post and Courier	(843) 853-POST
Dorchester County/Summerville Library	(843) 871-5075
Greater Summerville/Dorchester County Chamber	(843) 873-2931
Dorchester County Voter Registration	(843) 832-0132